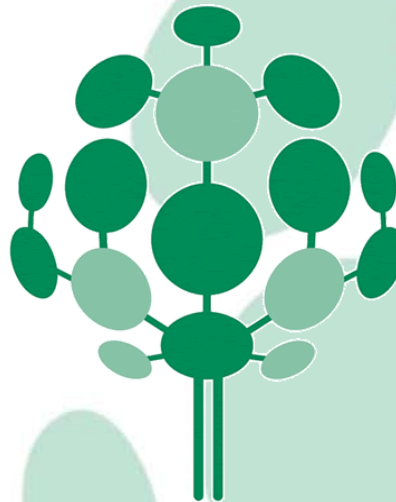


# Industrie Chimiche Forestali S.p.A.

## Made in Italy since 1918

Year 2019

**100+**  
ANNIVERSARY



**INDUSTRIE  
CHIMICHE  
FORESTALI**

[www.forestali.com](http://www.forestali.com)

**DURABOND**

# THE WORLD OF ADHESIVES AND SEALANTS

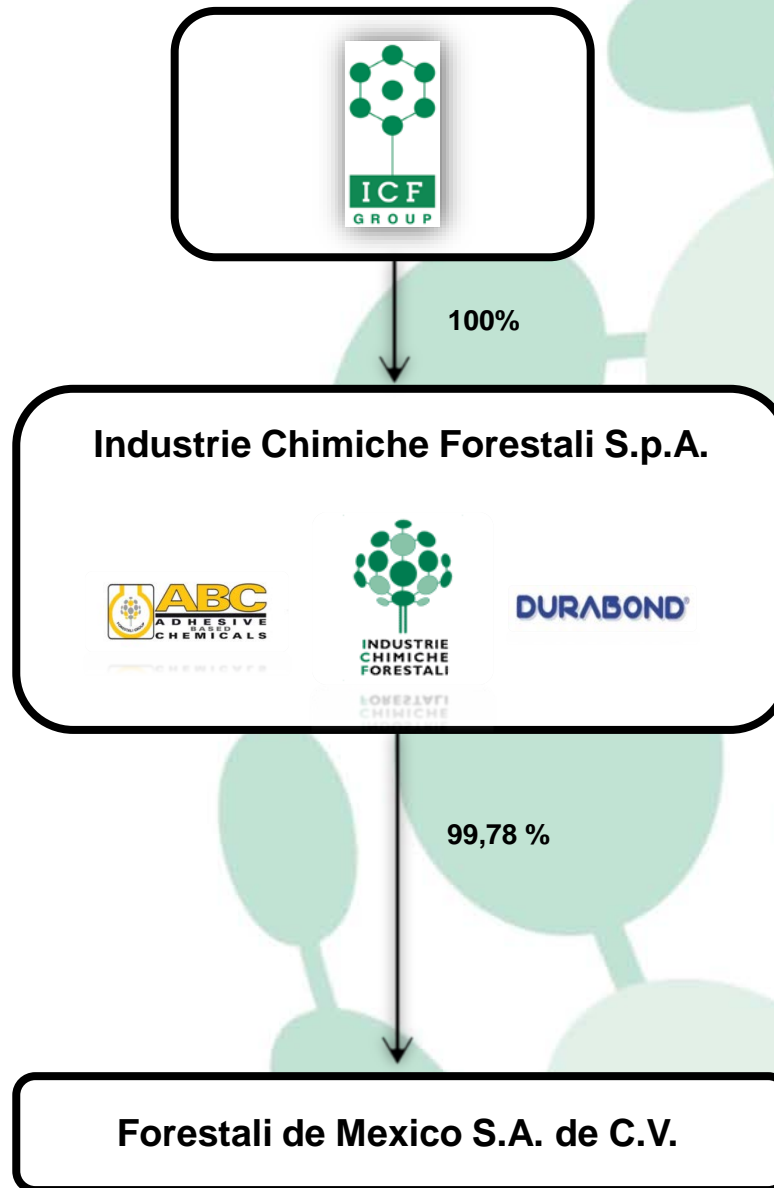
<https://www.youtube.com/watch?v=nvCFj5mPMyc&feature=youtu.be>



# Agenda

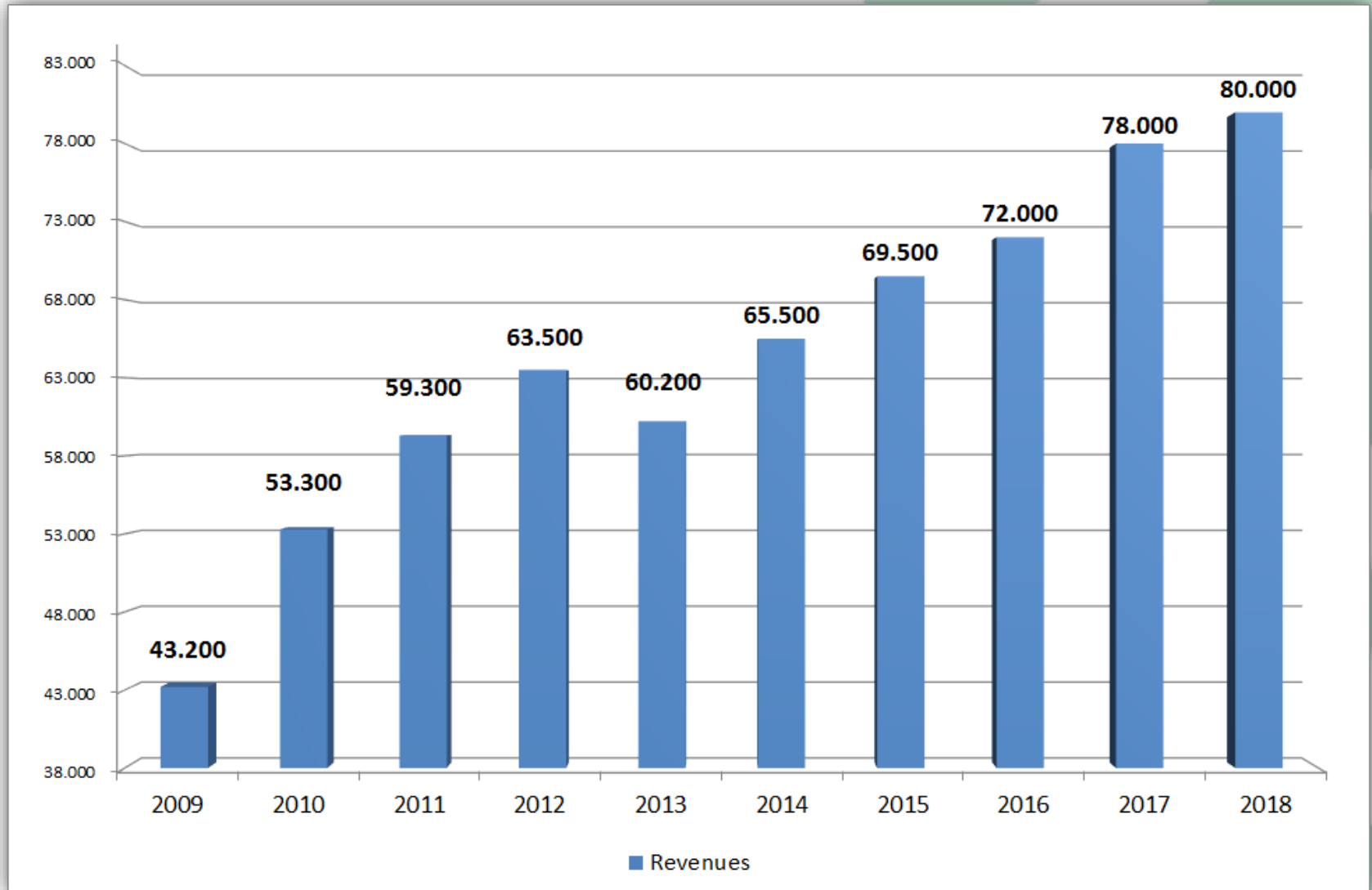
- **Group Structure**
- **Consolidated Revenues**
- **Export and Domestic Revenues**
- **Revenues by Geographic Area - 2018**
- **Revenues by Market Segment - 2018**
- **Distribution**
- **Team**
- **Organization Chart**
- **Production Site**
- **Products**
- **Information Technology**
- **R&D**
- **Certifications**

# Group Structure



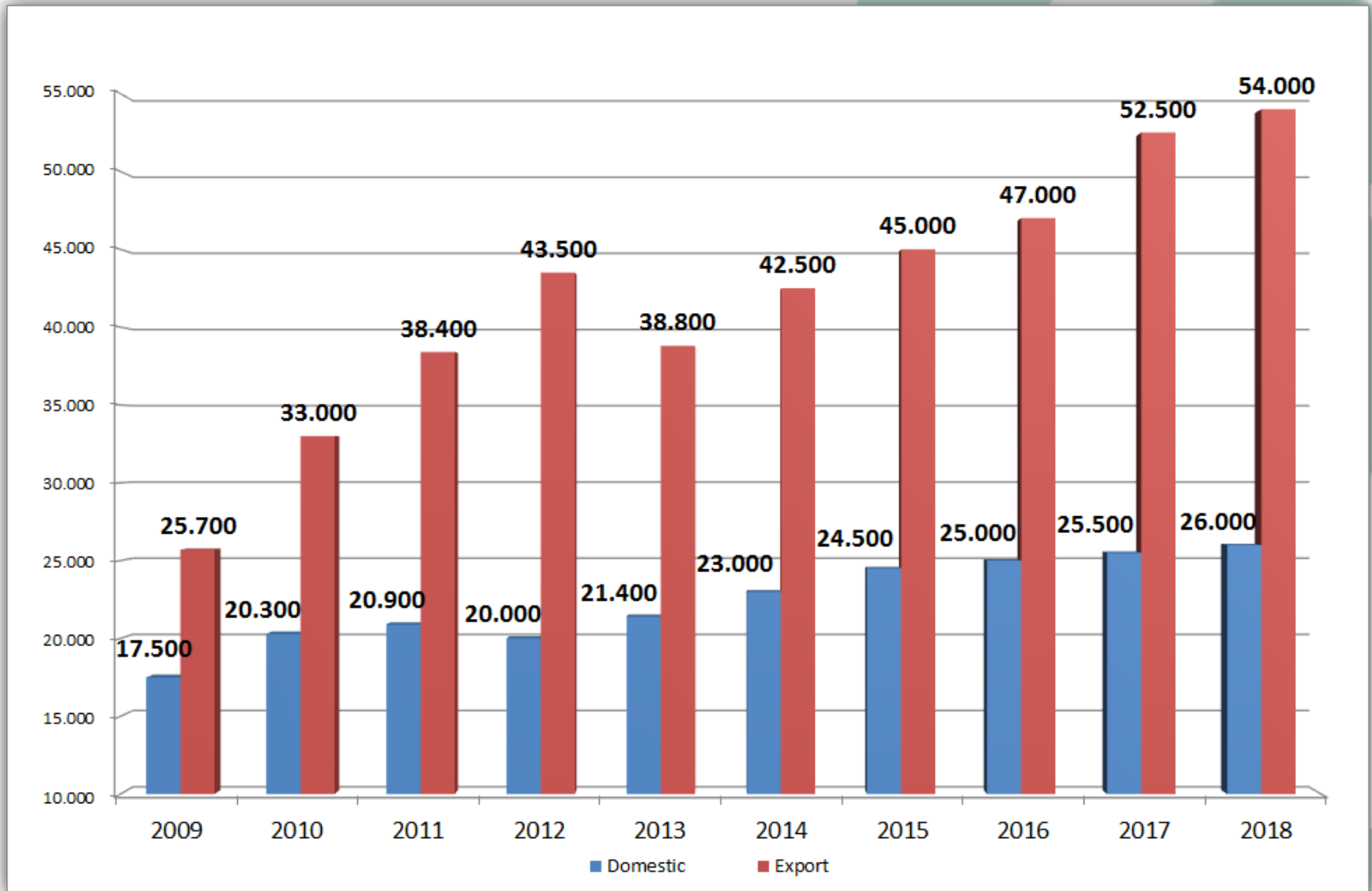
# Consolidated Revenues

(Value in K€)

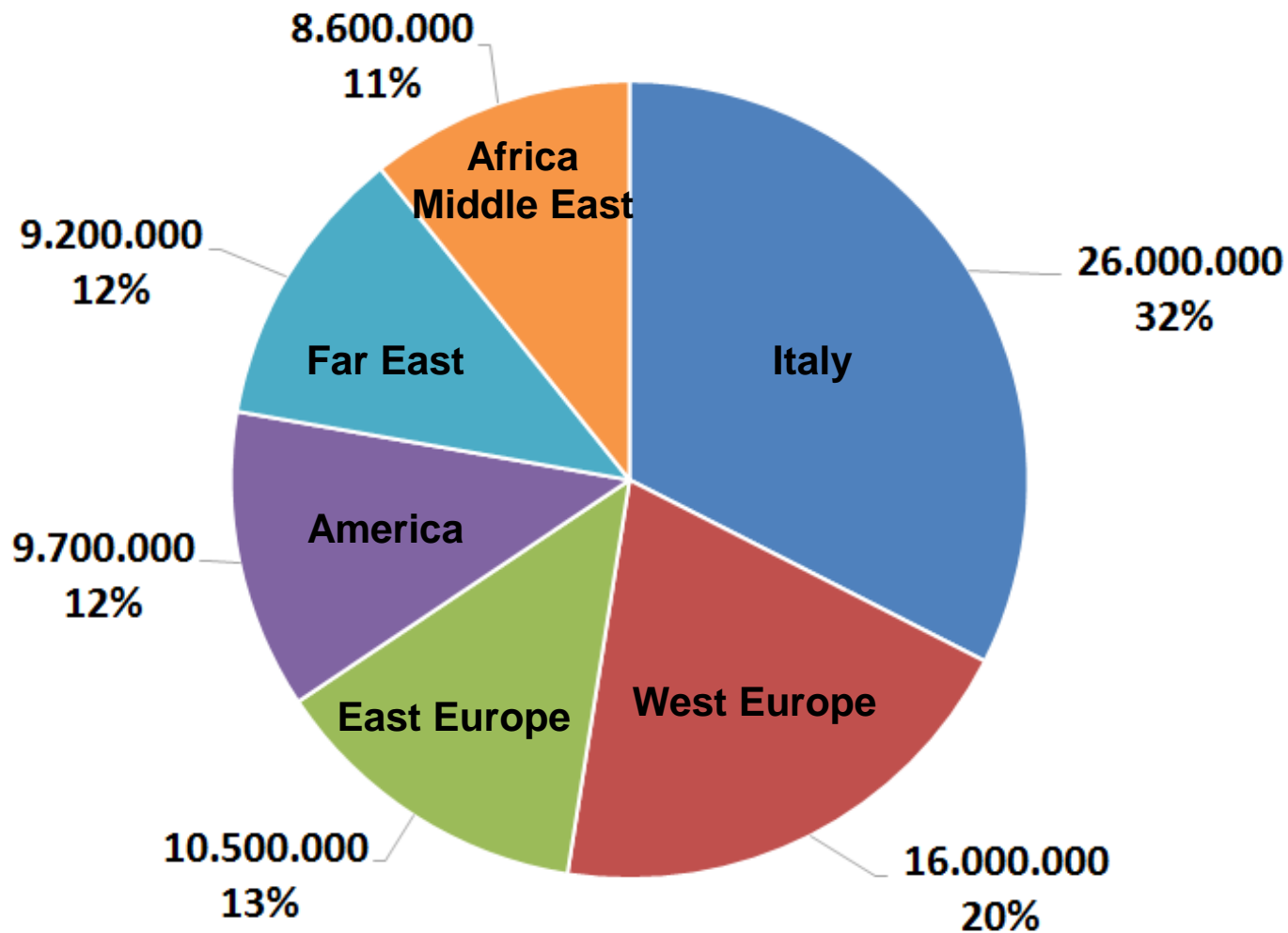


# Export and Domestic Revenues

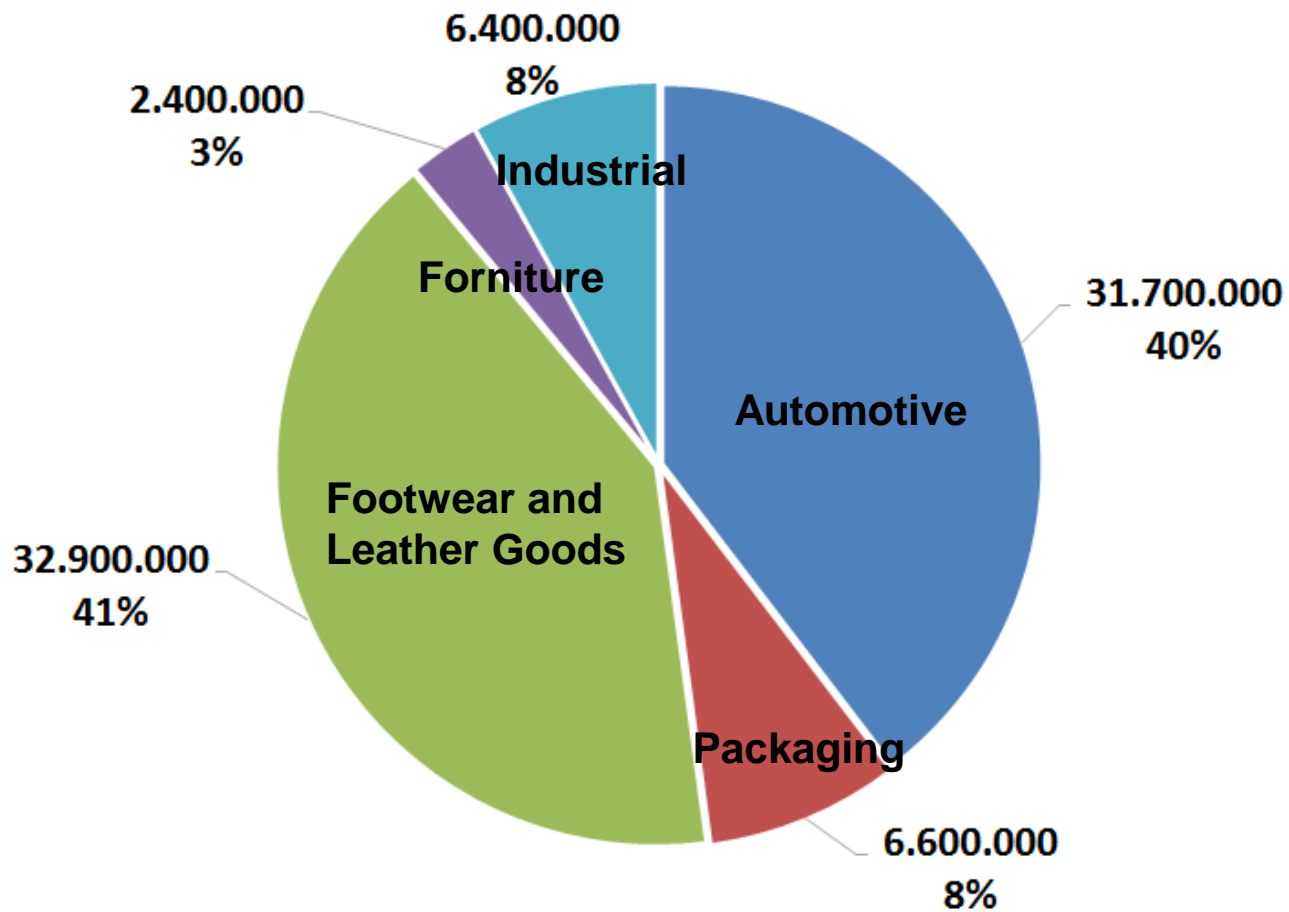
(Value in K€)



## Revenues by Geographic Area - 2018

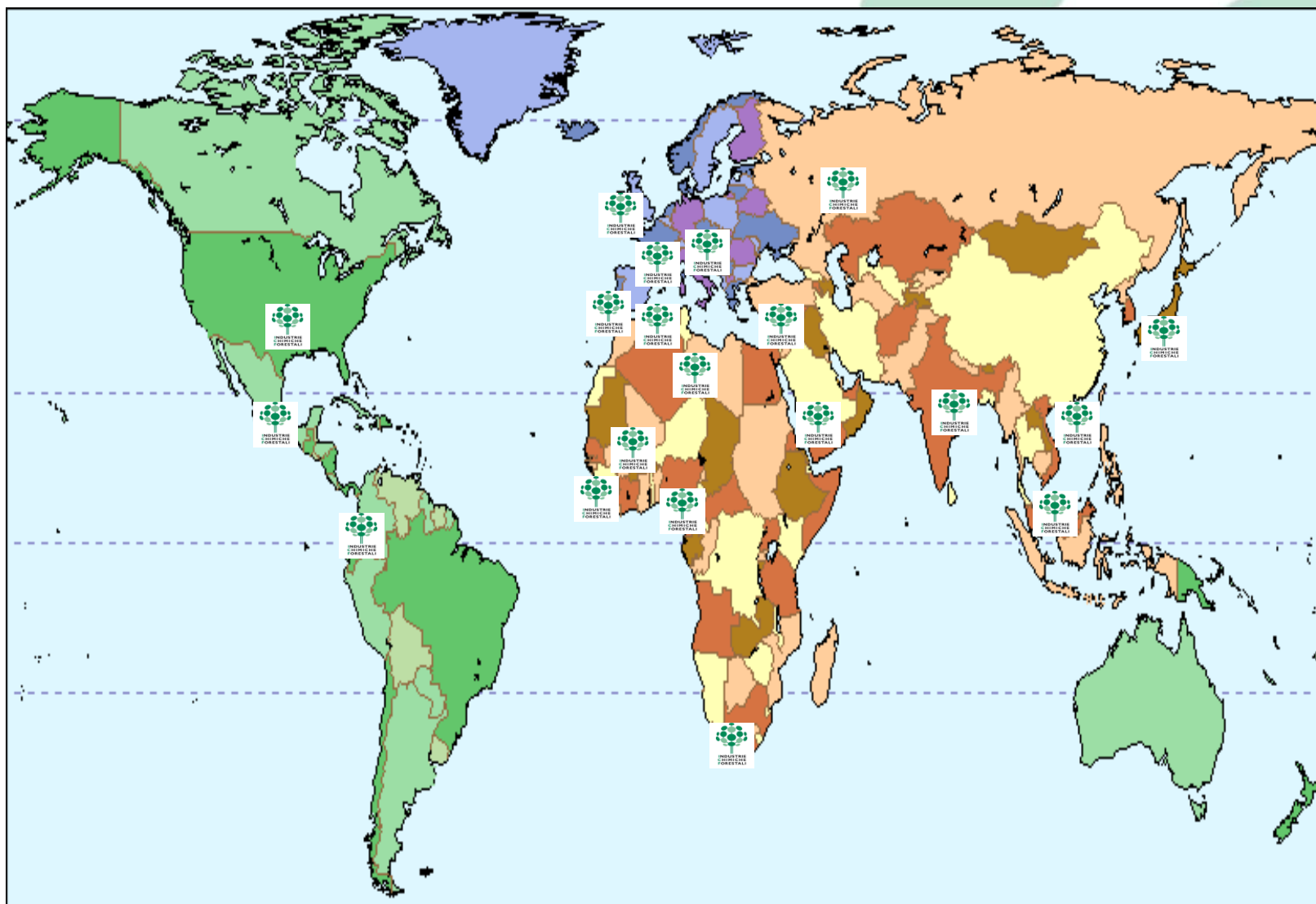


## Revenues by Market Segment - 2018



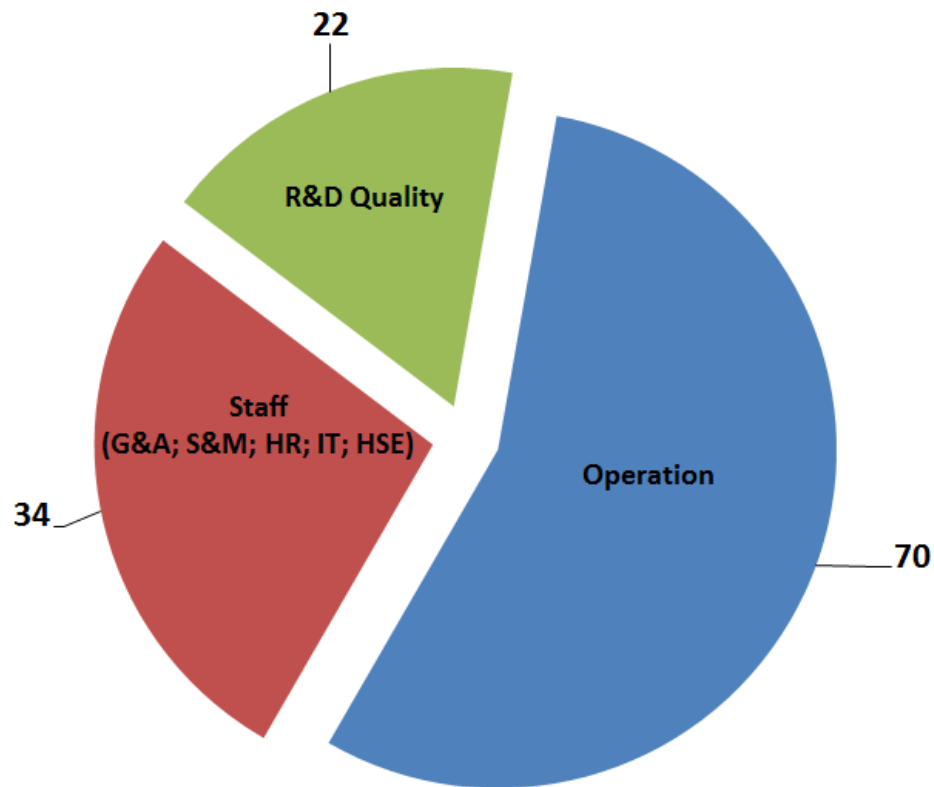


# DISTRIBUTION



# TEAM

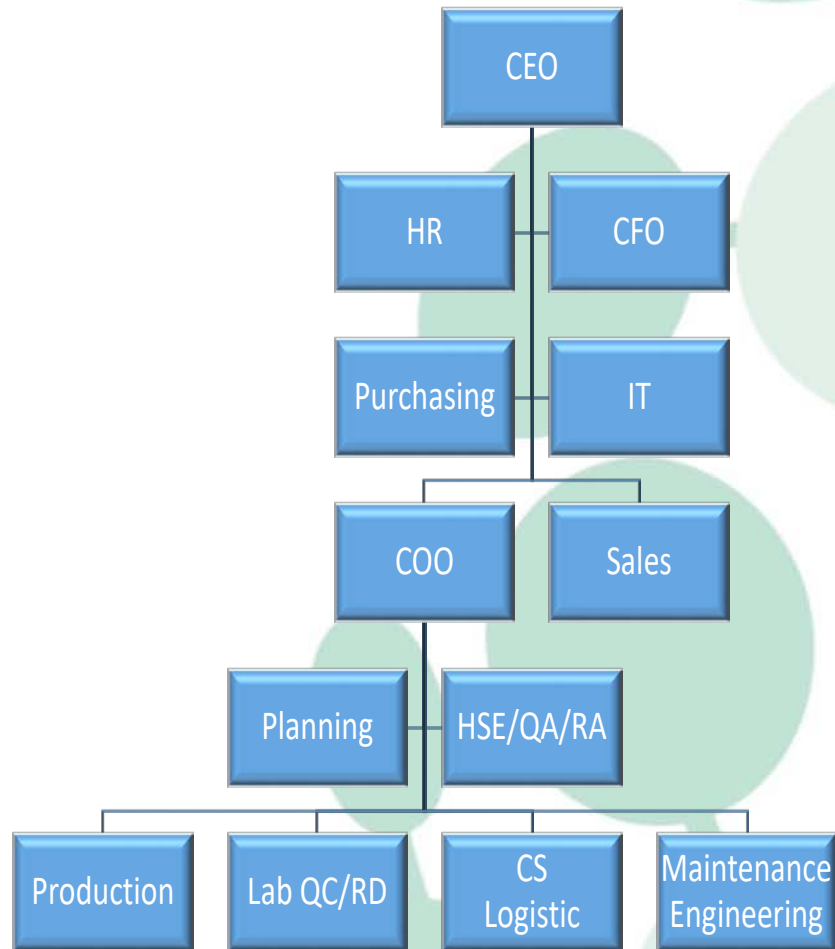
126\* people of which 119 in Italy and 7 in the Mexican subsidiary.





# Organization Chart

INDUSTRIE CHIMICHE FORESTALI S.P.A.



# Production Site

The plant is located in Marcallo con Casone, near Milan, in a highly industrialized area with very good connections to airports and highways.

The plant occupies an area of about 60.000 square meters.





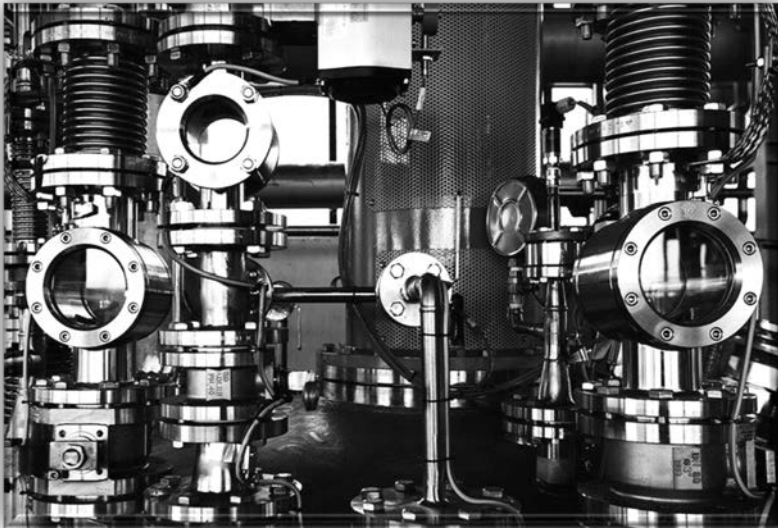
# Products

- **ADHESIVES**

- Water base
- Solvent free
- Solvent base
- Catalyzator

- **FABRICS\***

- Impregnated
- Coextruded



\*Fabrics: Toe Puff / Counters / Reinforces

# Adhesives

Shoe



Leather Goods



Car



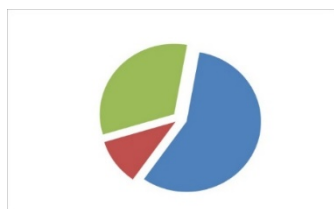
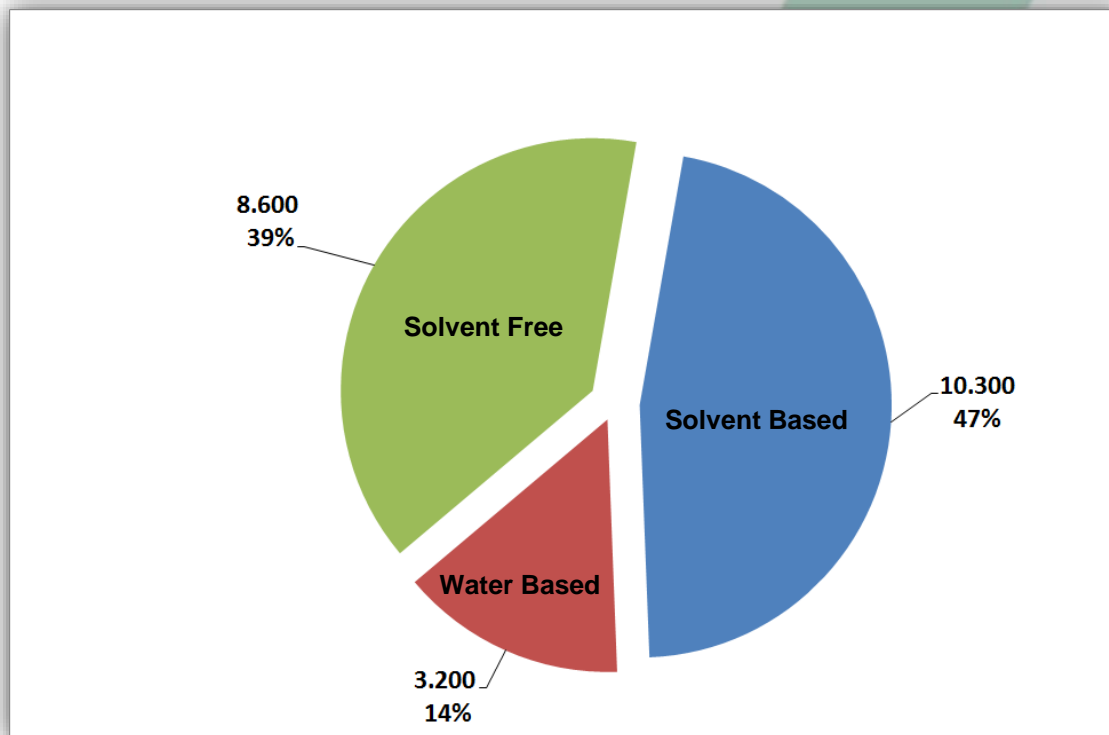
Packaging



Upholstery



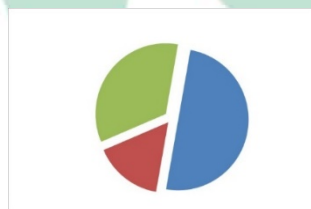
## Adhesive 2018 (Tons)



2013



2014



2015



2016



2017

# FABRICS

**Counter**



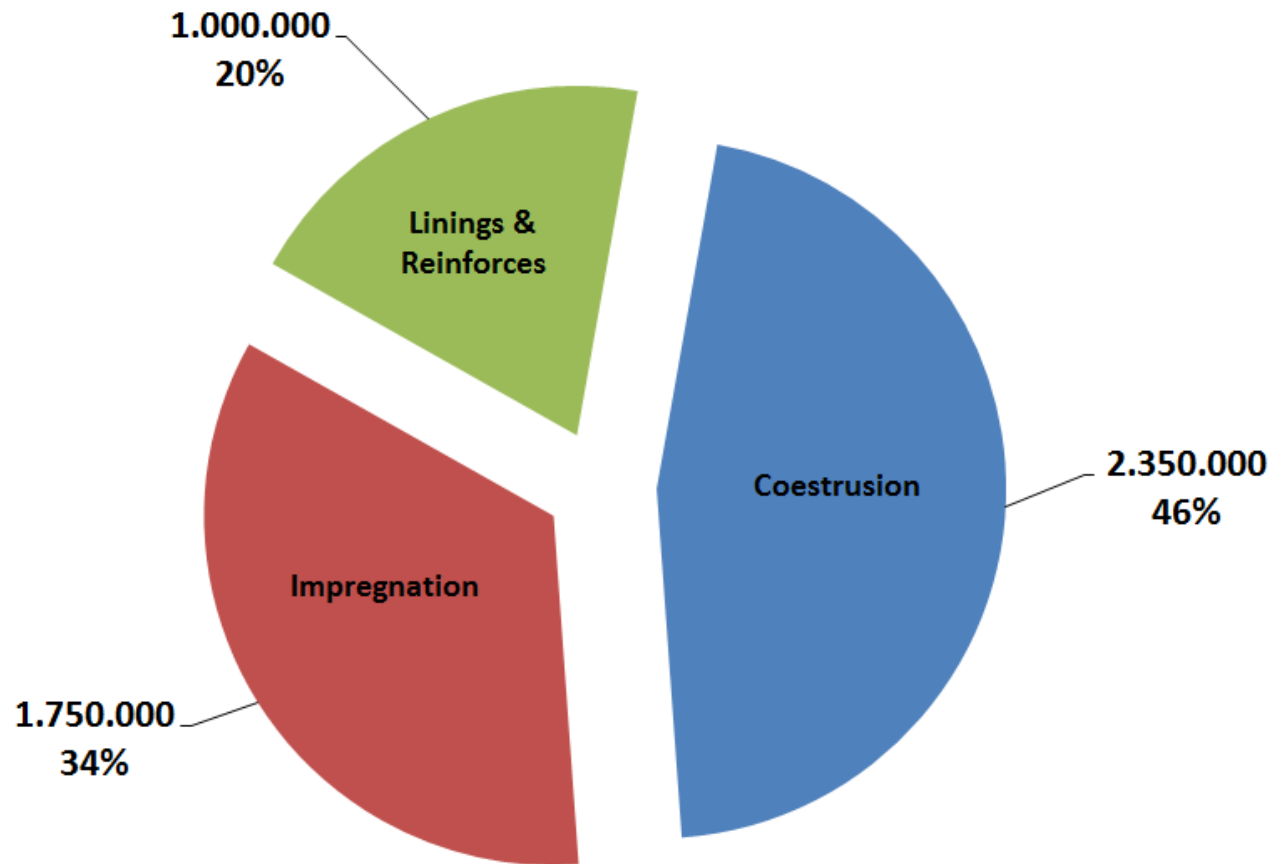
**Toe Puff**

**Reinforce**





## Fabric 2018 (Square Meters)



# Information Technology

The Group has an internal information Technology department that manage our internal information system.

Through continuous investment and projects the corporate information system is the management platform that ensures daily operations and provides the necessary support to management.

Below a list of Solutions and Services implemented and integrated business processes:

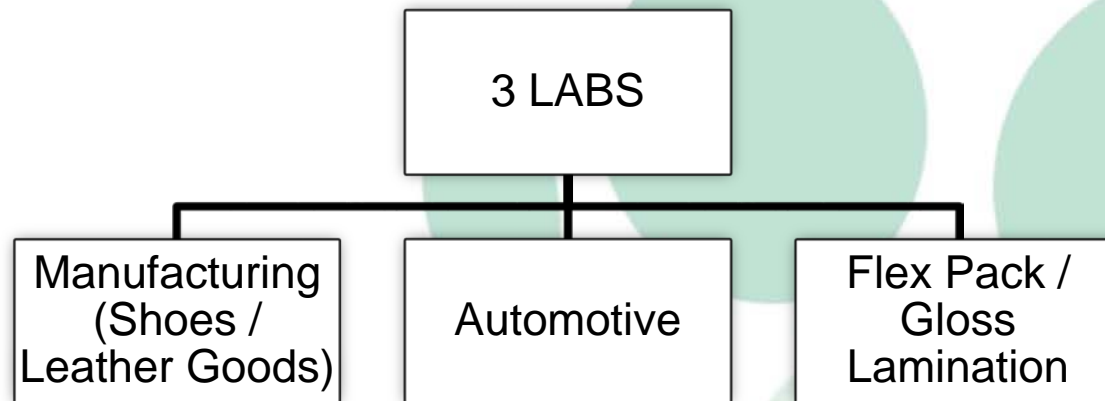
1. Platform: SAP R/3 RELEASE 6.0
2. Integrated Modules: Finance/ Controlling / Material Management / Production Planning / Sales & Distribution/ Quality Management
3. The management system is used by 70 users
4. All our external deposits related to SAP
5. Warehouse Management in Radio Frequency

# R&D

Forestali Group has a strong point in its ability to develop and customize its products.

In addition, the group has the need to check and guarantee product quality and the efficacy of its applications.

To this purpose the group created a modern technological center with all the necessary state-of-the-art resources and instruments necessary for R&D activities and pre and after-sale technical assistance.



## HSE/QA

- 1997: CERTIFICATE UNI EN ISO 9001 - QUALITY -
- 1998: CERTIFICATE UNI EN ISO 14001 - ENVIRONMENTAL -
- 2001: REGISTRATION EMAS - INTEGRATED -
- 2009: CERTIFICATE OHSAS 18001 - SAFETY -
- 2013: INTERNAL AUDIT PROCESS D . Legge 231/01
- 2019: CERTIFICATE IATF 16949 - AUTOMOTIVE -
- Three Managers fully dedicated to HSE/QA activity